

## Facilities Master Plan Objectives

### 1. Improving Accessibility

When people enter St. Luke's current building, they must climb steps or enter using an exterior ramp. Once inside, the following areas are accessible only by stairs:

1. Gym
2. All classrooms
3. Fox Hall
4. Music Room
5. Library
6. Kitchen
7. Offices
8. All but one restroom
9. Conference Room

These stairs make it difficult for individuals living with any form of impaired mobility, either temporary or permanent, to use any of these rooms. The Illinois Accessibility Code will require these changes at the time we make a significant financial investment in our building. Even without such a legal requirement, we want to make our building welcoming and accessible to all.

### 2. Updating Existing Structure

The minimal necessary improvements have their significant costs. While St. Luke's has maintained our building systems well, construction codes and community standards have changed during the past forty years. If St. Luke's were to address each of the identified changes individually, we would need to spend \$1.5 - \$2.0 million during the next ten years.

Some examples of these changes include:

- Increase restroom size and capacity to meet accessibility requirements.
- Extend central air conditioning to replace inefficient window units.
- Replace the roof on Fox Hall, which has outlived its 20-year life expectancy.
- Add an elevator.
- Replace deteriorating exterior concrete steps and ramp.
- Add fire suppression sprinklers, enclose open stairwells with fire doors, and move rooms for children under age 6 to above grade.

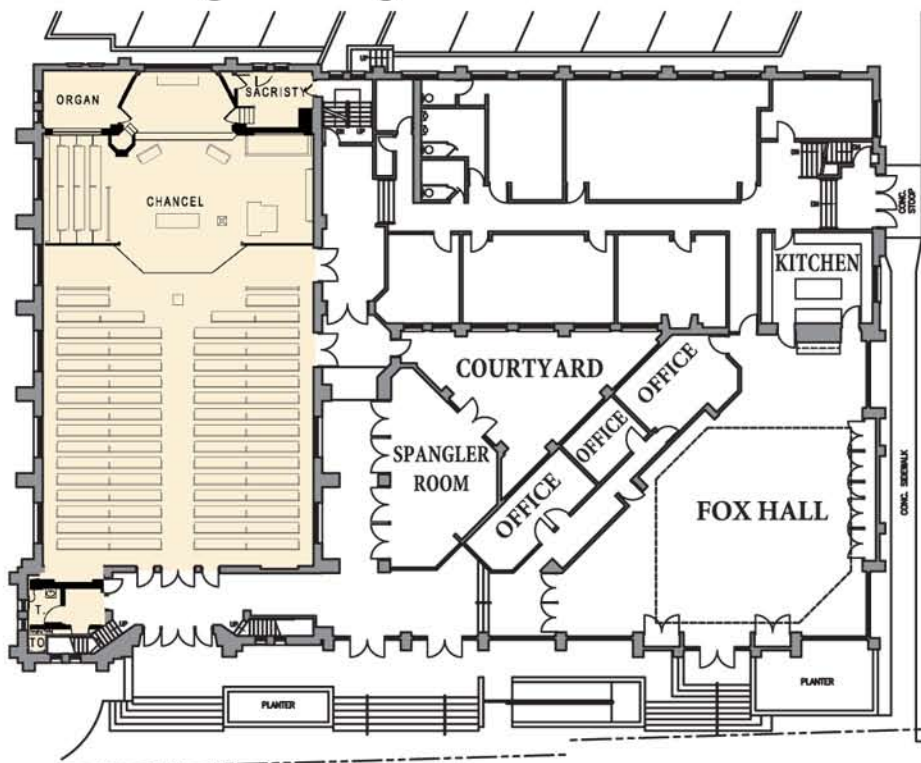
If we were to choose this method to maintain our structure, we would lose space for current ministries and programs. These improvements can be accomplished in a more cost-effective manner if they are incorporated into a comprehensive building and expansion program.

### 3. Increasing Usable Spaces

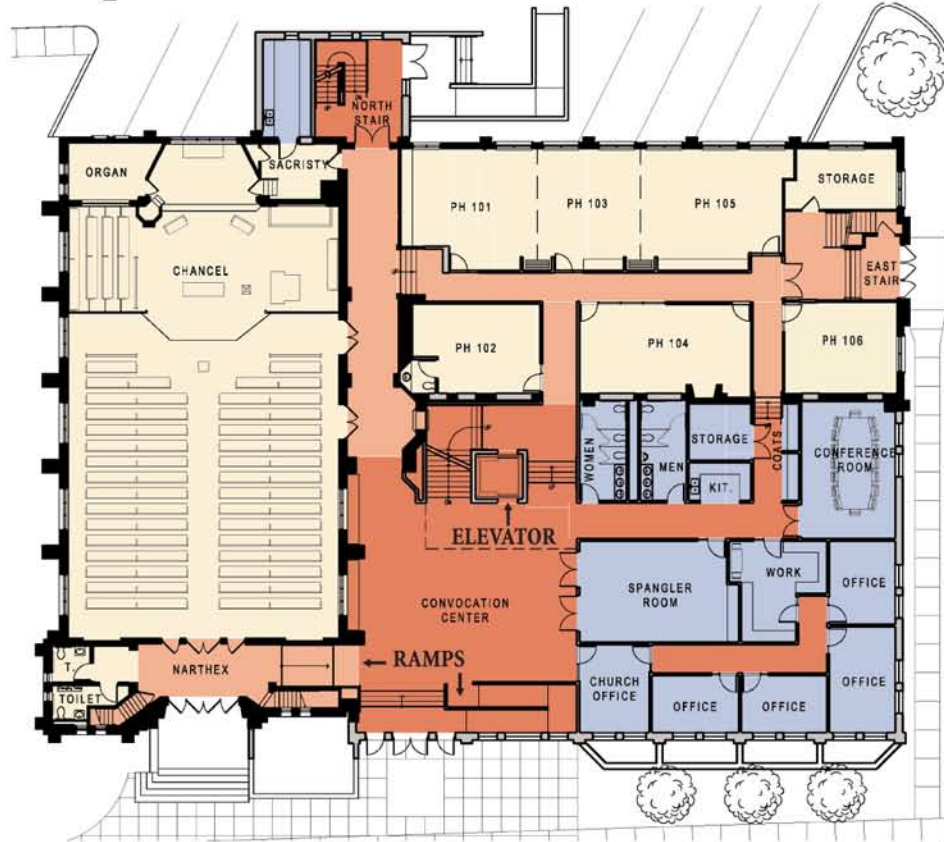
St. Luke's is home to many ministries of the congregation and to many community groups. The limitations of our current building structure make it difficult to accommodate all these groups. After consulting with architects and reviewing several alternatives, the Master Plan Task Team recommends tearing down a portion of the building and replacing it with a new three-level structure.

By reconfiguring St. Luke's building in this way, we could better accommodate the variety of ways the congregation's ministries and the community are served.

## Existing Building - Main Floor Plan View



## Proposed - Modernized Main Floor Plan View



Large display boards with the proposed upper and lower modernized floor plans are available to view at St. Luke's.

### St. Luke's Facilities History

St. Luke's has adapted to suit the changing needs of our ministries several times during the past 94 years. As we look toward our second century of ministry, we prepare to adapt again to better meet our current and future ministry needs.

1918 - Construction completed on the Bungalow Church on Euclid Avenue.  
\$7,700 in 1918 = \$120,000 in 2007 dollars

1929 - Construction completed on Sanctuary and North Wing (Parish House) at Prospect and Cedar.  
\$150,000 in 1929 = \$1.8 million in 2007 dollars

1971 - Construction completed on Fox Hall addition.

\$400,000 in 1971 = \$2.1 million in 2007 dollars

1995 - New organ installation and chancel remodeling.  
\$380,000 in 1995 = \$520,000 in 2007 dollars

2007-2008 - Facilities Master Plan prepared and presented to congregation to update structure and increase building space by 10,000 square feet.  
Estimated cost to build = \$5-6 million in 2008 dollars

2014 - St. Luke's celebrates our 100th Anniversary guided by our Mission and Ministries Master Plan and working within our completed building as envisioned in our Facilities Master Plan.

*"A time to break down  
and a time to build up"*

Ecclesiastes 3:3